

Exponential Functions

Evaluate each function at the given value.

1) $f(x) = \frac{1}{3} \cdot 6^x$ at $x = 2$

12

2) $f(n) = 10 \cdot 2^n$ at $n = 5$

320

3) $f(n) = 10 \cdot 2^n$ at $n = -2$

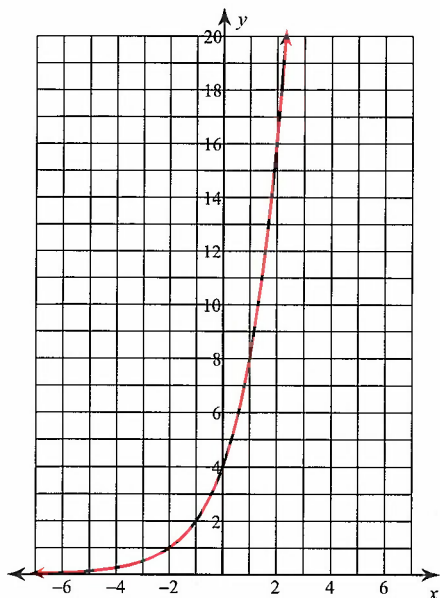
 $\frac{5}{2}$

4) $g(x) = \frac{1}{5} \cdot \left(\frac{1}{3}\right)^x$ at $x = 3$

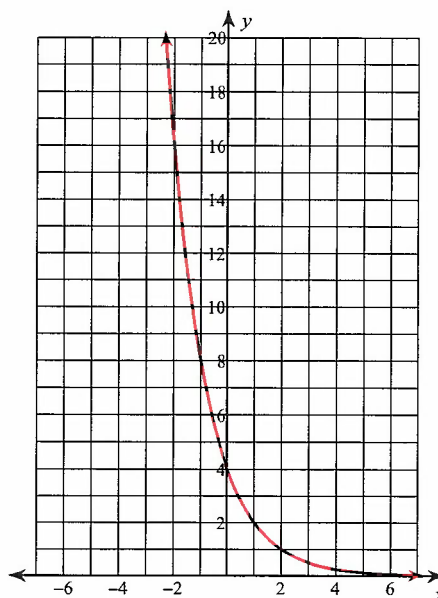
 $\frac{1}{135}$

Sketch the graph of each function.

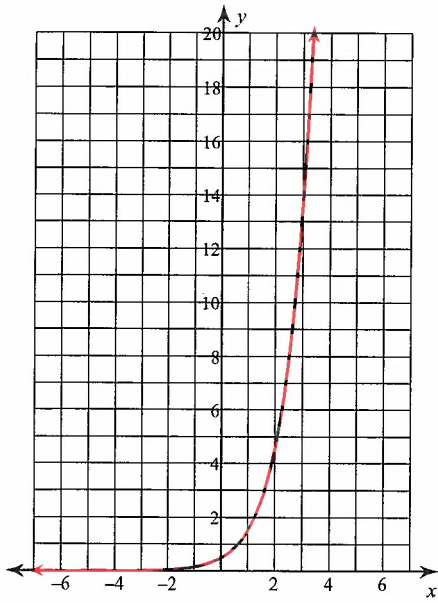
5) $f(x) = 4 \cdot 2^x$



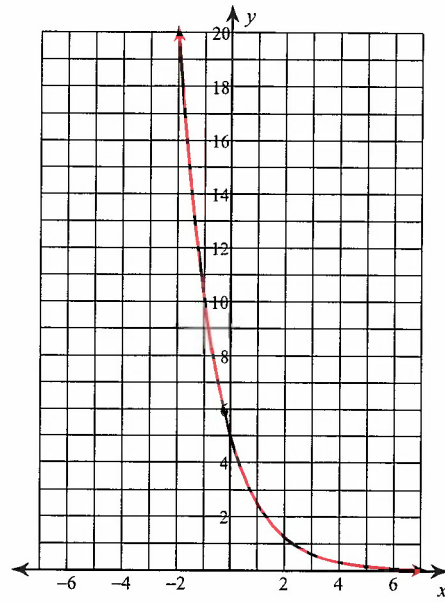
6) $f(x) = 4 \cdot \left(\frac{1}{2}\right)^x$



$$7) f(x) = \frac{1}{2} \cdot 3^x$$



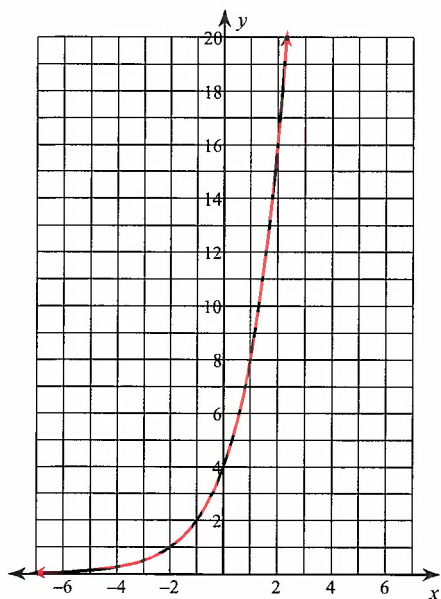
$$8) f(x) = 5 \cdot \left(\frac{1}{2}\right)^x$$



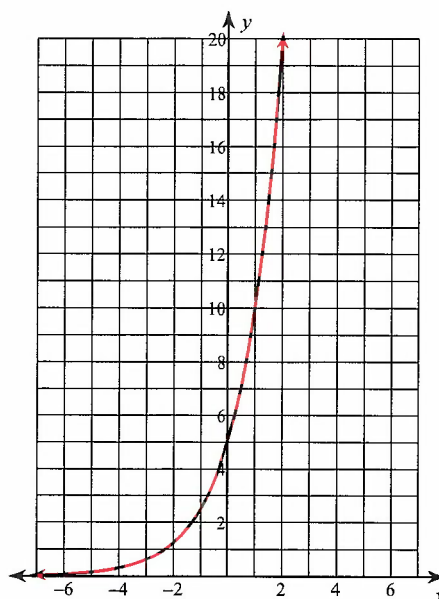
Graphing Exponential Functions

Sketch the graph of each function.

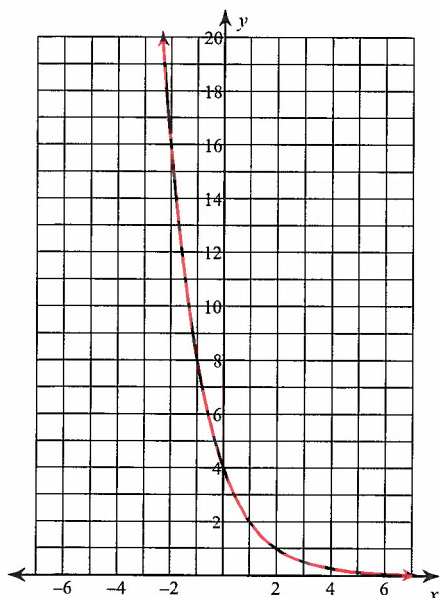
9) $y = 4 \cdot 2^x$



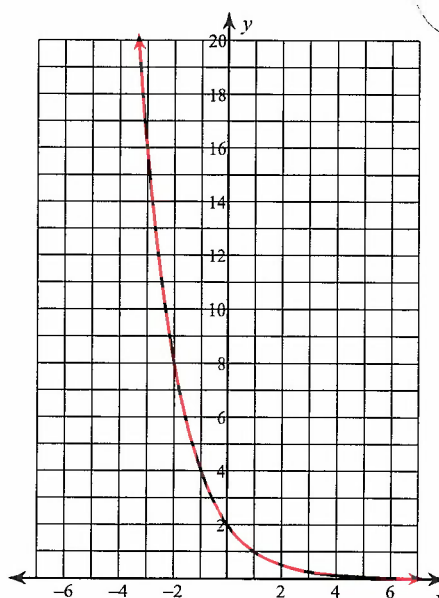
10) $y = 5 \cdot 2^x$



11) $y = 4 \cdot \left(\frac{1}{2}\right)^x$



12) $y = 2 \cdot \left(\frac{1}{2}\right)^x$



Score : _____

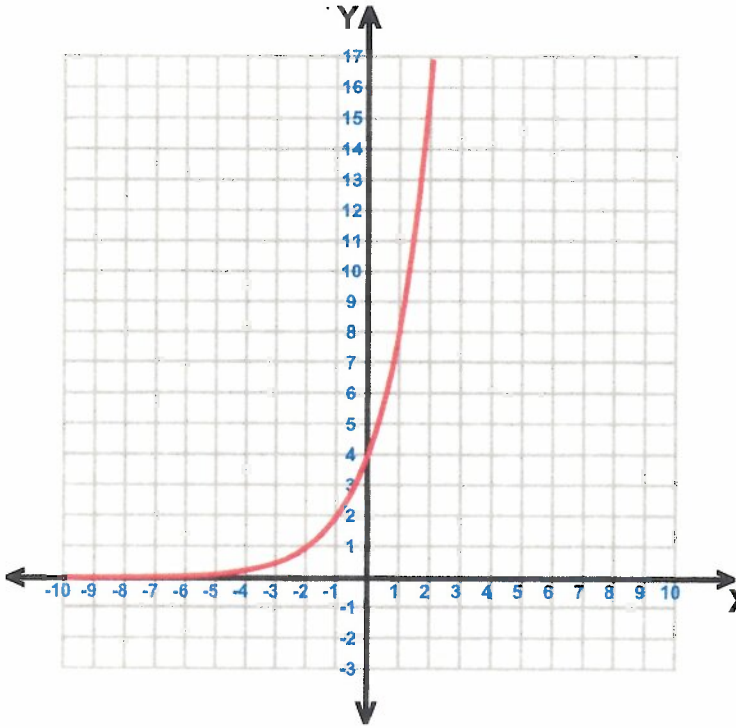
Date : _____

Score : _____

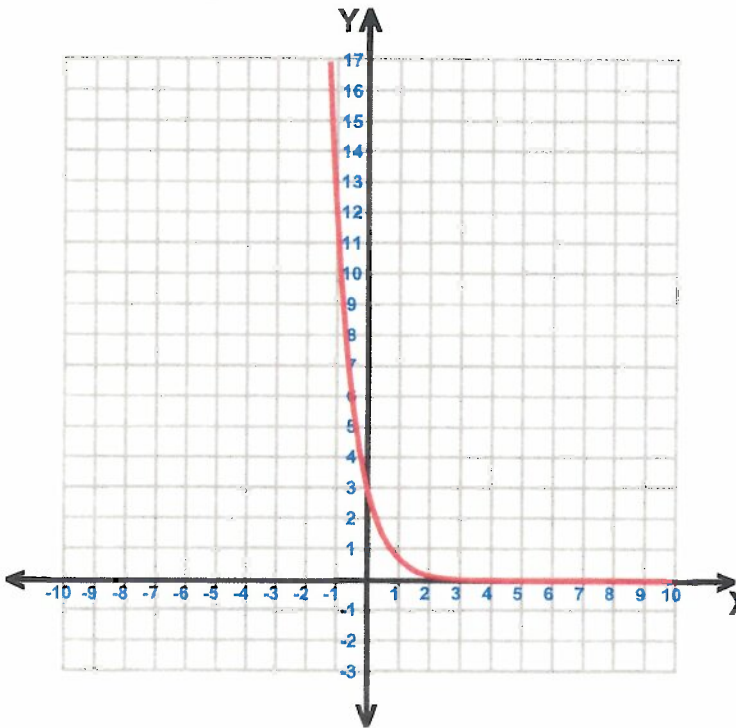
Date : _____

ponential Functions

13
2) $y = 4 \cdot 2^x$

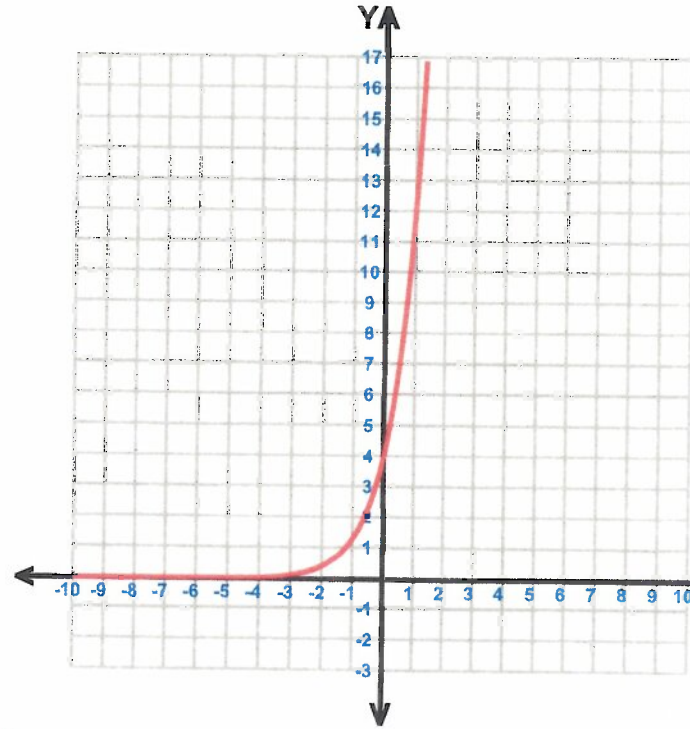


14
4) $y = 3 \cdot \left(\frac{1}{4}\right)^x$



ponential Functions

15
6) $y = 4 \cdot 3^x$



16
8) $y = 3 \cdot \left(\frac{1}{4}\right)^x$

